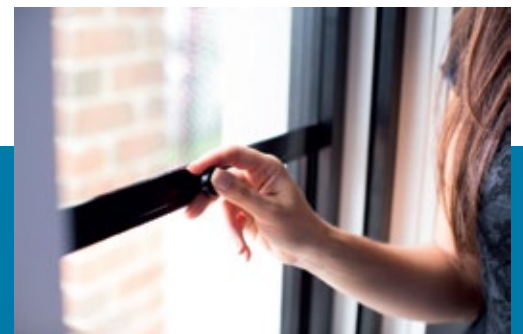
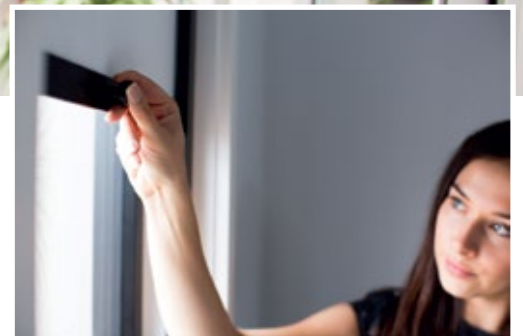


ScreenAway™
simply beautiful

**VEN
LU
REE**



Jamie Durie | internationally acclaimed designer and ScreenAway brand ambassador



Call us
FREephone
0800 836 587

Email: sales@venluree.co.nz
www.venluree.co.nz



Retractable Fly Screen

Features

- No more looking at ugly fly screens 24/7
- Easily fitted to virtually all types of windows, old and new
- Suitable for most single doors, sliding doors, feature doors, roof windows, skylights, bain-marie and food displays
- Out of sight, out of mind
- Turn every sliding or double hung window into a servery
- No braking system or spring loaded roller
- Pulley operated system with strong, hard wearing Kevlar cable
- No chains or cords, making it neat, stylish and hazard free
- Available in a variety of frame colours
- Makes cleaning windows so much easier

Specifications

ScreenAway maximum dimensions

Small pelmet system

- 1600mm high x 1400mm wide

Pelmet Size

- 47mm high x 39mm deep

Large pelmet system

- 1800mm high x 2000mm wide
- 2400mm high x 1800mm wide
- 2800mm high x 1600mm wide

Pelmet Size

- 79mm high x 56mm deep

Side tracks (frame)

- 35mm width

Retractable Blinds

Features

- Easily fitted to virtually all types of windows, old and new
- Suitable for most single doors, sliding doors, feature doors, roof windows, skylights, bain-marie and food displays
- Out of sight, out of mind
- No braking system or spring loaded roller
- Pulley operated system with strong, hard wearing Kevlar cable
- No chains or cords, making it neat, stylish and hazard free
- Available in a variety of frame colours
- Provides an excellent room darkening effect
- 4 fabric colour options
- Can help contain heat and cool

Specifications

ScreenAway maximum dimensions

Small pelmet system

- 1600mm high x 1200mm wide

Pelmet Size

- 47mm high x 39mm deep

Large pelmet system

- 1800mm high x 2000mm wide
- 2200mm high x 1800mm wide
- 2400mm high x 1600mm wide
- 2800mm high x 1400mm wide

Pelmet Size

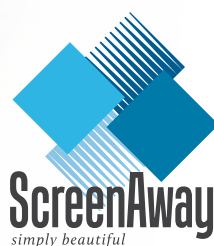
- 79mm high x 56mm deep

Side tracks (frame)

- 35mm width

"The ScreenAway System is a great Australian design innovation"

Jamie Durie



Call us

FREEPHONE 0800 836 587

Email: sales@venturee.co.nz

www.venturee.co.nz