



FETUNA CASSETTE

The Fetuna Cassette awning is architecturally inspired to allow a streamlined look when retracted. Designed in France and custom manufactured in New Zealand to withstand the harshest of environments. Cassette awnings are great if you require maximum protection and modern design with little maintenance. Made from the same quality components as the Horizon awning, the Fetuna is built to last!

UNBEATABLE QUALITY

Fetuna Cassette awnings are manufactured from high quality aluminium & Stainless steel components and are backed by a 5 year warranty for peace of mind.

COMPLETE PROTECTION

The fabric skin and mechanisms are completely protected when retracted, meaning a longer life and greater functionality.

FEATURES

WIDTH X EXTENSION

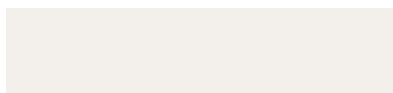
Minimum (mm): 2501 x 2000
Maximum (mm): 5800 x 4000

FABRIC

Acrylic Canvas - Docril
Shadeview Mesh

COLOURS

Warm White Pearl



OPERATION

Manual Crank Operation
Automated

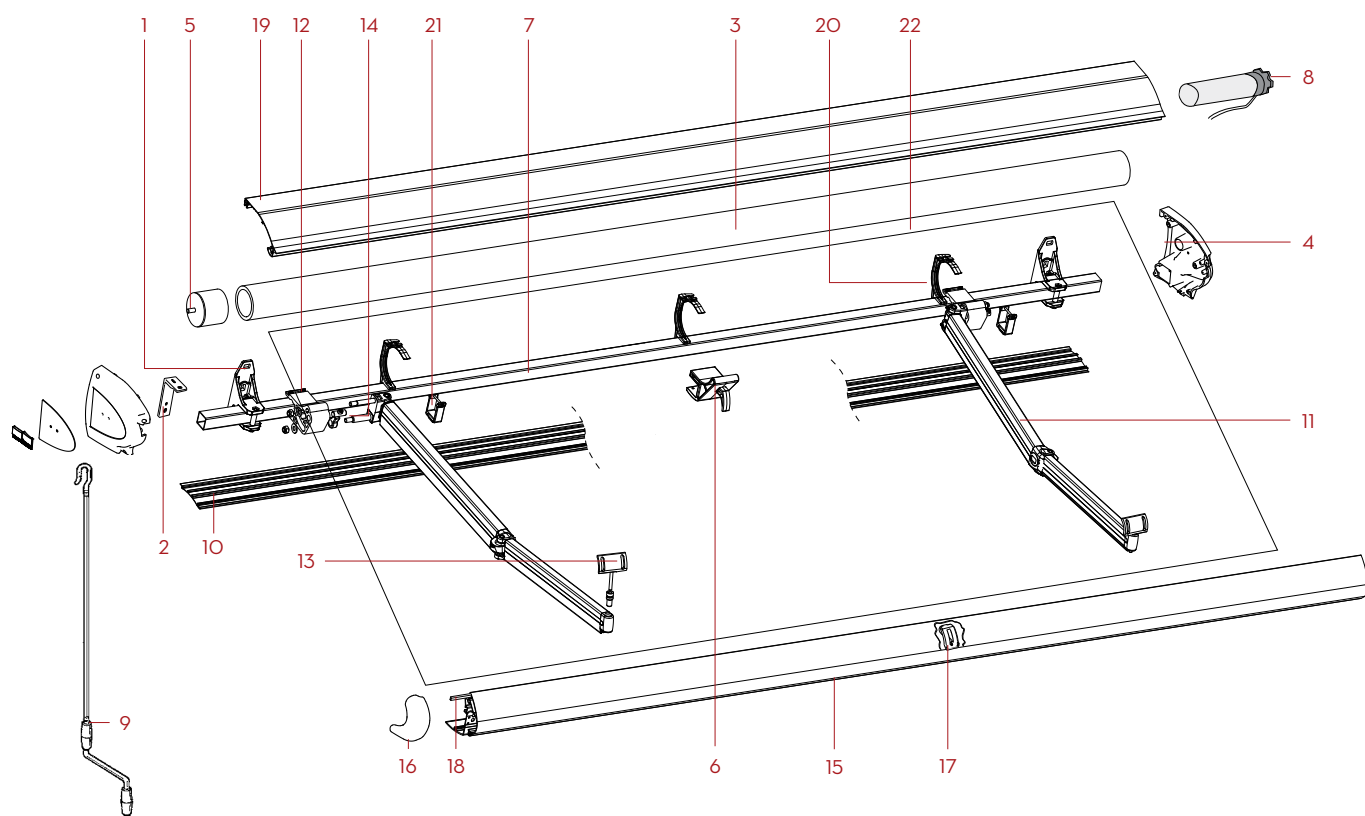
AUTOMATION OPTIONS

Sun & Wind Sensor
Motion Sensor

Anthracite

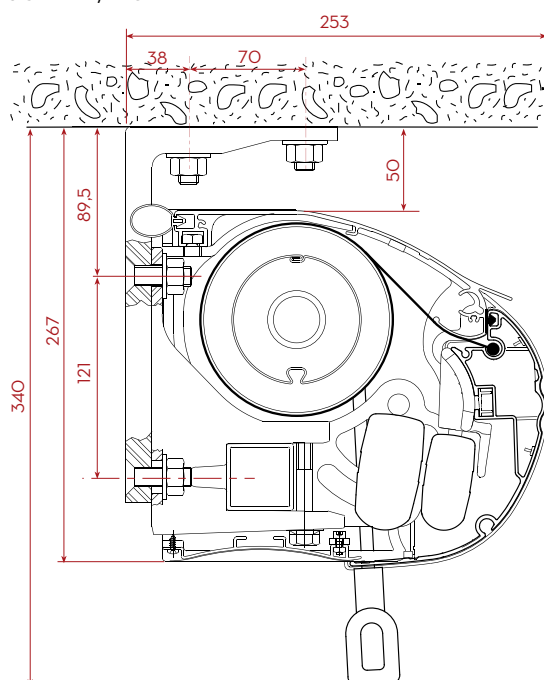


FETUNA CASSETTE

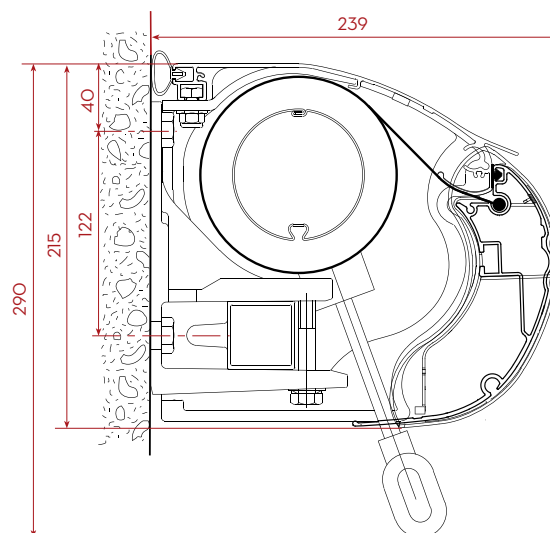


- | | | |
|--------------------------------------|----------------------------------|--------------------------------------|
| 1 Facefix bracket | 9 Crank handle | 17 Centre cam |
| 2 Soffit/Top Fix | 10 Bottom Cassette extrusion | 18 Weather seal |
| 3 78mm Aluminium roller tube | 11 Arms | 19 Top Cassette - extruded aluminium |
| 4 Cassette end plates - Aluminium | 12 Adjustable pitch arm bracket | 20 Cassette support brackets |
| 5 78mm Cast aluminium drive bearing | 13 Fall bar hand | 21 Bottom Cassette bracket |
| 6 Centre roller tube support | 14 Pitch adjustment bracket | 22 Fabric skin |
| 7 40 x 40 x 4mm Aluminium square bar | 15 Fall bar - Extruded aluminium | |
| 8 Motor - automation | 16 Fall bar endcap | |

SOFFIT / TOP FIX



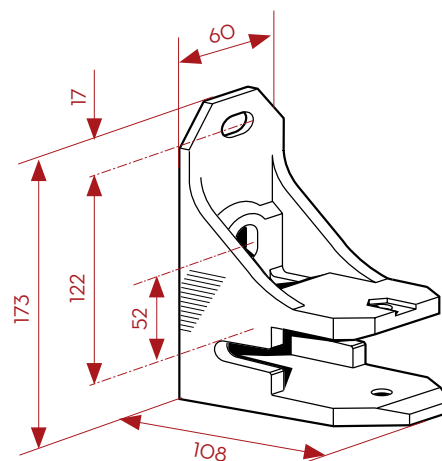
FACE FIX



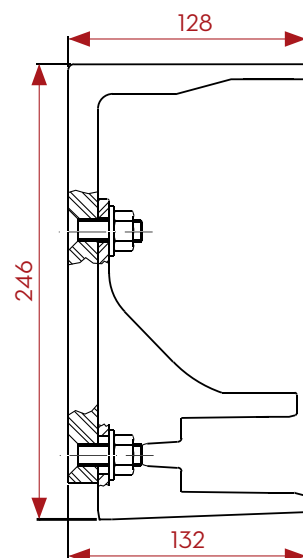
MINIMUM WIDTH VS PROJECTION		
Awning Width		
2 ARMS		
Projection	Gearbox	Motor
2000	2526	2493
2500	3056	3023
3000	3548	3515
3500	4188	4155
4000	4768	4735



FACEFIX BRACKET



SOFFIT / TOP FIX



INSTALLATION HEIGHT REQUIREMENTS

